

PRODUCT CATALOG



CERKAMED

MEDICAL COMPANY

Seize
the impossible!

Made in Poland





Broken
Tool
Remover

BTR PEN
CE

Dental tool for removing broken canal instruments

- + life-long warranty
- + single-tool system for every type of root canal
- + precise grip of the broken instrument
- + thinnest working tip on the market - only \varnothing 0,3 mm



THREE TIPS ONE GOAL



\varnothing 0,3 mm
wire diameter 0.076 mm



\varnothing 0,4 mm
wire diameter 0.085 mm



\varnothing 0,5 mm
wire diameter 0.1 mm

Set includes:

- BTR PEN - 1 pc stainless steel tool
- BTR CALIBRATOR - 1 pc
- BTR TIP \varnothing 0,3 - 5 pcs
- BTR SPRING - 2 pcs soft and hard (third middle spring fixed on the device)
- Silicone BTR O-RING - 3 pcs

Changeable tips available separately, packed in 5 pcs



Seize the impossible!



btr-pen.com



facebook.com/groups/btrpen

Join our fanpage

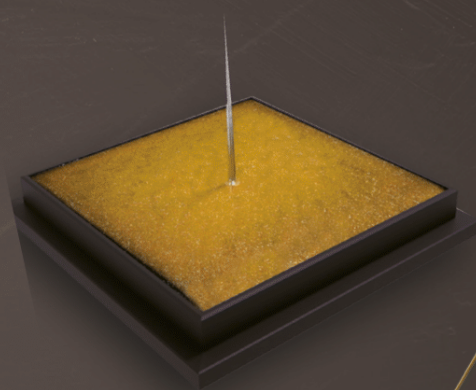
L I M I T E D
Golden
 edition

Join the world's endodontic elite
 with limited edition of BTR PEN

Set includes:

- BTR PEN Limited Golden Edition
 - 1 pc stainless steel tool
- BTR CALIBRATOR - 1 pc
- GOLDEN BTR TIP - 0,3 mm - 20 pcs
- BTR TIP - 0,4 mm - 10 pcs
- BTR TIP - 0,5 mm - 10 pcs
- BTR SPRING - 2 pcs soft and hard
 (third middle spring fixed on the device)
- Silicone BTR O-RING - 3 pcs

Let the
luxury
 enter you
 dental
 office



**BTR PEN
 GOLDEN EDITION**
 CE



btr-pen.com

btr

Dental training

Ideal kit for training

the removal of broken endodontic files from root canals

1. DIGITAL MICROSCOPE ADSM201

- MINI HDMI input
- MINI USB port
- MICRO SD card input
- high regulation
- LED lightning

2. MICROSCOPE'S INSTRUCTION FOR USE

3. TWO TRAINING TEETH

with pieces of broken endodontic files

HARD 3 deeply placed, blocked pieces of files (requiring processing before removal)

EASY 3 loosely placed pieces of files

4. SILICONE TRAINING MASS

- transparent and backlit
- 8 pieces of broken endodontic files
- a space to place the training tooth

5. SILICONE MASS STAND

- allows 3D rotation

6. BTR Pen WORK METHODOLOGY

- work with BTR Pen step by step

7. ANTI-SLIP MAT

- stability during the work with the kit

BTR DENTAL TRAINING KIT



Also available:

btr gum

Dental training



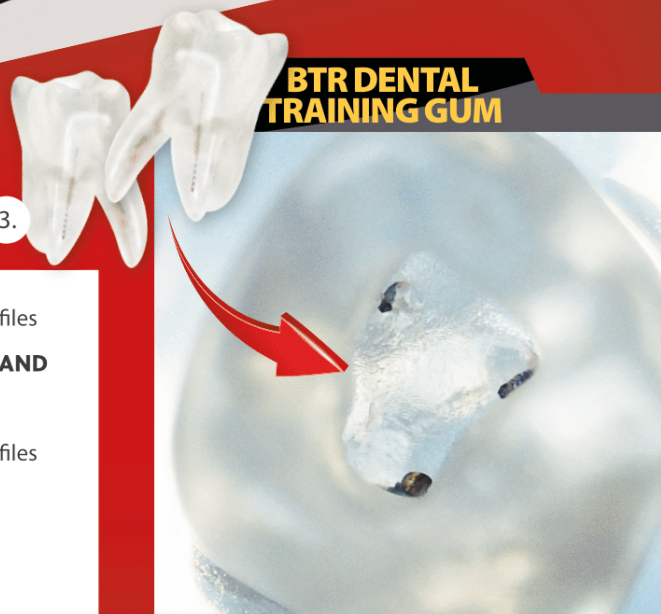
BTR DENTAL TRAINING GUM

1. SILICONE TRAINING MASS
with pieces of broken endodontic files

2. SILICONE TRAINING MASS STAND
• allows 3D rotation

3. TWO TRAINING TEETH
with pieces of broken endodontic files (easy/hard)

4. ANTI-SLIP MAT



TOTAL BLEND

WHITE | DENTINA light-curing calcium hydroxide liner

TOTAL BLEND is intended for use during dental treatment as a primer before laying the composite material. Contrasting in X-ray imaging. The high filler content minimizes shrinkage and facilitates insertion of the product.

Available now!

Available packages:

Total Blend White

(product in white colour)
syringe containing 1,5 g of the preparation,
disposable applicators

Total Blend Dentina

(product in dentine shade)
syringe containing 1,5 g of the preparation,
disposable applicators



Instructions for use:



1. Clean and dry the treatment field.



2. Apply the appropriate layer of **TOTAL BLEND DENTINA/WHITE** primer to a thin layer of dentin (pink dentin). Do not apply the primer to the entire surface of the cavity.



3. Cure with the light of a polymerization lamp for 30 seconds.



4. Apply the etching gel to the prepared treatment field and then apply the filling.



RAINBOW FLOW dentina

LIGHT-CURING FLOW COMPOSITE

- ✓ **RAINBOW FLOW dentine** is intended for the restoration of anterior and lateral teeth in their natural colour, the attachment of orthodontic brackets and the protection of root canal orifices.
- ✓ Preparation that imitates dentine **A2**

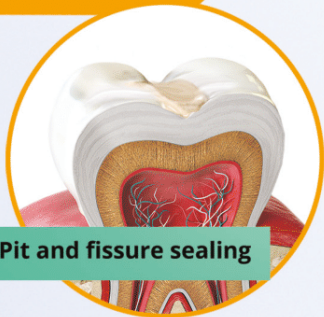


filler content 62%

- ✓ **Package contains:**
1 x syringe containing 1 g of preparation + applicators



Application:



✓ **Pit and fissure sealing**



✓ **Filling of permanent teeth and milk teeth or protection of root canal orifices**

RAINBOW FLOW dentina
compliant with EN ISO 4049

- ✓ **Tooth splinting** and also as a protective marking of the enamel border for temporary splints and retainers



• Compression strength



• Bending strength

Light-curing flow composite

RAINBOW FLOW

CE 2409 SUPER SIX

Available packages:
- 6 x syringe 1 g (colour: orange, blue, pink, yellow, green, purple) + applicators



- orange
- blue
- pink
- yellow
- green
- purple



Colour palette for kids

3D Stickers



RAINBOW FLOW

CE 2409

Available packages:
- syringe 1 g (chosen colour) + applicators





Available packages:
 CHLORAXID 2% 200 g
 CHLORAXID 2% 400 g
 CHLORAXID 5,25% 200 g
 CHLORAXID 5,25% 400 g

CHLORAXID
 CE 2409 Sodium hypochlorite 2% or 5,25% in liquid

! use with: ENDO-PREP CREAM



PREPARATION for root canals rinsing

Available packages:
 CHLORAXID 2% EXTRA 200 g
 CHLORAXID 2% EXTRA 400 g
 CHLORAXID 5,25% EXTRA 200 g
 CHLORAXID 5,25% EXTRA 400 g



CHLORAXID EXTRA
 CE 2409 Sodium hypochlorite 2% or 5,25% in liquid + surfactants

! use with: ENDO-PREP CREAM



CREAM for root canals preparation

Available packages:
 ENDO-PREP CREAM 2 ml
 ENDO-PREP CREAM 5 ml
 ENDO-PREP CREAM 10 ml
 ENDO-PREP CREAM MEGA PACK 3 x 10 ml



ENDO-PREP CREAM
 EDTA 15% in cream, urea peroxide CE 2409

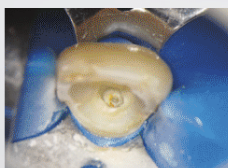
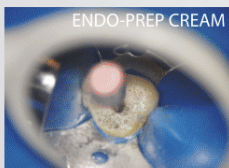
! recommended to use with liquids from CHLORAXID line



GEL for root canals preparation

Available packages:
 ENDO-PREP GEL 2 ml
 ENDO-PREP GEL 5 ml
 ENDO-PREP GEL 10 ml

ENDO-PREP GEL
 CE 2409 EDTA 17% in gel





DLS™
DISPENSER LABELLING SYSTEM

Available packages:
ENDO-SOLUTION 50 ml
ENDO-SOLUTION 200 g

LIQUID for root canals widening

ENDO-SOLUTION

EDTA 17% in liquid

CE 2409

LIQUID for root canals rinsing

Available packages:
GLUCO-CHEX 2% 200 g
GLUCO-CHEX 2% 400 g

GLUCO-CHEX 2%

CE 1011 Chlorhexidine digluconate 2% in liquid

⚠ use with: HYDROCAL



Safety Adapter System™

Available packages:
CITRIC ACID 40% 200 g
CITRIC ACID 40% 400 g

CITRIC ACID 40%

CE 2409



Available packages:
ISOPROPYL ALCOHOL 200 g

ISOPROPYL ALCOHOL



DLS™
DISPENSER LABELLING SYSTEM



Endo irrigation needles



Available packages:
 ENDO-TOP 20 pcs
 ENDO-TOP 50 pcs
 ENDO-TOP 100 pcs

ENDO-TOP
 CE 2409



LABELLED luer - lock dispensers of 5 ml - 20 pcs

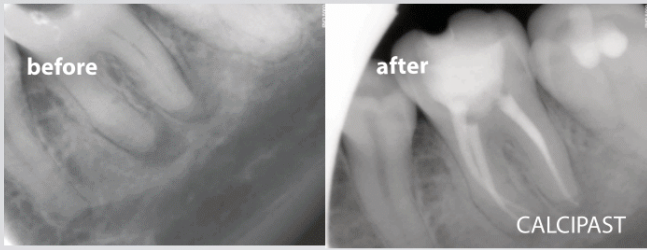


Available for products:
 CHLORAXID 2% EXTRA,
 CHLORAXID 5,25% EXTRA,
 CHLORAXID 2%,
 CHLORAXID 5,25%,
 GLUCO-CHEX 2%,
 ENDO-SOLUTION,
 ENDO-SOLUTION PREMIUM,



20 x

ENDO-PACK



Calcium hydroxide paste for temporary root canal filling

Available packages:
CALCIPAST 2,1 g
CALCIPAST MEGA PACK 4 x 2,1 g



CALCIPAST
CE 2409 Calcium hydroxide

Available packages:
HYDROCAL 10 g

calcium hydroxide,
calcium salts, hydroxyapatite

HYDROCAL
CE 2409

Available packages:
container of 30 g



Calcium hydroxide cement for filling cavities



IODOFORM

Fast-setting root canal repair material

ZINC OXIDE FAST
CE 2409

Zinc oxide, excipients

Available packages:
ZINC OXIDE FAST 50 g

Material for making pastes



Available packages:
ZINC OXIDE 50 g

ZINC OXIDE
CE 2409 Zinc oxide



EUGENOL
CE 2409 Eugenol oil 100%

Available packages:
EUGENOL 10 ml
EUGENOL 20 ml

Oil for making pastes

CANAL DETECTOR
CE 2409 Methylene blue

Available packages:
CANAL DETECTOR 2 ml

Root canals orifices indicator



The best in the world!
 • short setting time • plasticity • biocompatibility • strength

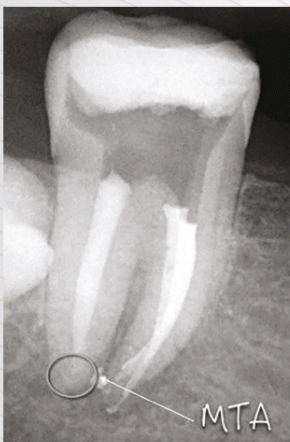


Available packages:
 MINI 3 x 0,14 g BIO MTA+ powder,
 1 ml liquid
 MAXI 10 x 0,14 g BIO MTA+ powder,
 2 x 1 ml liquid



BIO MTA+
 CE 2409

Biomaterial for filling and rebuilding of root canals



MTA+
 CE 2409

Material for filling and rebuilding of root canals

Available packages:
 MINI 3 x 0,14 g MTA+ powder,
 1 ml liquid
 MAXI 10 x 0,14 g MTA+ powder,
 2 x 1 ml liquid

Possible variants:
 APPLICATOR FOR MTA+
 0,8 mm
 APPLICATOR FOR MTA+
 1,2 mm

MTA+ APPLICATOR
 CE



DENTAL TOOLS FOR HANDLING AND APPLICATION OF MTA+
 CE

MATRIX MTA+
 CE



Training set

Endodontic training set for application MTA

MTA SMART SYSTEM TRAINING SET

Set includes:



SILICONE TRAINING MASS

TRAINING TEETH PCS

SILICONE TRAINING MASS STAND
ALLOWS 3D ROTATION

TRAINING
MTA POWDER 5 g

TRAINING
MTA LIQUID 3 ml

MEASURING CUP
FOR MTA POWDER

PIPETTE FOR
MTA LIQUID APPLICATION



SLIDE



2633-101-PCL

Maxillary first molar
3 canals, 3 roots
Perforation of the
bottom of the chamber
chamber floor, lateral wall
perforation of the palatal
root



2111-1A2-PCL

Maxillary central incisor
1 canal, 1 root
Incomplete root
development



2633-102-PCL

Maxillary first molar,
3 canals, 3 roots,
perforation of the pulp
chamber floor, external
apex resorption



3623-101-PCL

Mandibular first molar
3 canals, 2 roots
perforation of the
pulp chamber floor



3111-101-PCL

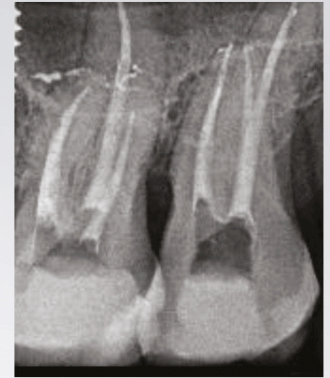
Mandibular central
incisor 1 canal, 1
root, anterior root
wall perforation



Also sell
separately!

Root canals filling and sealing material

★ SYNTEX ★
- A REAL KING AMONG ALL
THE SEALERS



Available packages:
syringe of 10 g of the preparation
+ mixing tip
+ mixing papers

SYNTEX
CE 2409



Available packages:
GUTTA PERCHA 2% 120 pcs
GUTTA PERCHA 2% 120 pcs marked
GUTTA PERCHA 4%, 6% 60 pcs
GUTTA PERCHA 4%, 6% 60 pcs marked
GUTTA PERCHA Pro Taper 60 pcs
GUTTA PERCHA Pro Taper 60 pcs marked
GUTTA PERCHA 2% ROUND PACKAGE 240 pcs
GUTTA PERCHA 2% ROUND PACKAGE 240 pcs marked
GUTTA PERCHA 4%, 6% ROUND PACKAGE 240 pcs
GUTTA PERCHA 4%, 6% ROUND PACKAGE 240 pcs marked

Color chart and sizes:

08	10	15	20	25	30	35	40	45	50	55	60	65	70	75	80	85	90	95	100	105	110	115	120	125	130	135	140	145	150	F1	F2	F3	F4	F5
----	----	----	----	----	----	----	----	----	----	----	----	----	----	----	----	----	----	----	-----	-----	-----	-----	-----	-----	-----	-----	-----	-----	-----	----	----	----	----	----

GUTTA PERCHA POINTS
CE 2409



Reusable dental tool for vertical condensation of gutta-percha

Available packages:
GUTTA PERCHA PLUGGER 1 pc
GUTTA PERCHA PLUGGER 4 pcs

GUTTA PERCHA PLUGGER
CE



Oil for dissolving gutta-percha



Available packages:
EUCALYPTOL 10 ml
pipettes for application 5 pcs

EUCALYPTOL

Eucalyptus oil 100% **CE** 2409

Available packages:
ORANGE GUTTANE 10 ml
pipettes for application 5 pcs

ORANGE GUTTANE

CE 2409 Orange oil 100%



Available packages:
METHYLENE CHLORIDE 10 ml



METHYLENE CHLORIDE

Dichloromethane pure p.a.

- Available packages:
- ABSORBENT PAPER POINTS 2% 200 pcs
 - ABSORBENT PAPER POINTS 2% 200 pcs marked
 - ABSORBENT PAPER POINTS 4%, 6% 100 pcs
 - ABSORBENT PAPER POINTS 4%, 6% 100 pcs marked
 - ABSORBENT PAPER POINTS ProTaper 100 pcs
 - ABSORBENT PAPER POINTS ProTaper 100 pcs marked
 - ABSORBENT PAPER POINTS 2%
 - Round package 400 pcs
 - ABSORBENT PAPER POINTS 2%
 - Round package 400 pcs marked
 - ABSORBENT PAPER POINTS 4%, 6%
 - Round package 240 pcs
 - ABSORBENT PAPER POINTS 4%, 6%
 - Round package 240 pcs marked 240 pcs



ABSORBENT PAPER POINTS

CE 2409



ENDO-ASPIRATOR

for removal liquids from the root canal by aspirating

ENDO aspirator **PRO**[®]

for removal liquids from the root canals

- equipped with **elastic applicator** allowing access to narrow root canals
- **magnetic fitting** to the unit
- safe for **autoclave sterilization**
- **German stainless steel**
- **reusable**
- suitable for **every type of suction device**

World's only solution!



Possible variants:
ENDO-ASPIRATOR PRO
ENDO-ASPIRATOR PRO Golden Version
PACKAGE INCLUDES:
HANDLE - 1 pc
ELASTIC APPLICATOR - 10 pcs
CONNECTOR - 3 pcs
LUER LOCK HOSE - 5 pcs
MAGNET - 5 pcs
RAMROD FOR CLEANING THE ENDO-ASPIRATOR PRO - 1 pc

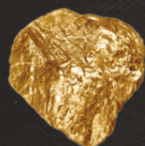


ADDITIONAL ACCESSORIES

PACKAGE INCLUDES:
LUER LOCK HOSE - 5 pcs
CONNECTOR - 1 pc



ENDO-ASPIRATOR PRO





Dental etchant

BLUE ETCH
 CE 2409 O-phosphoric acid 36%

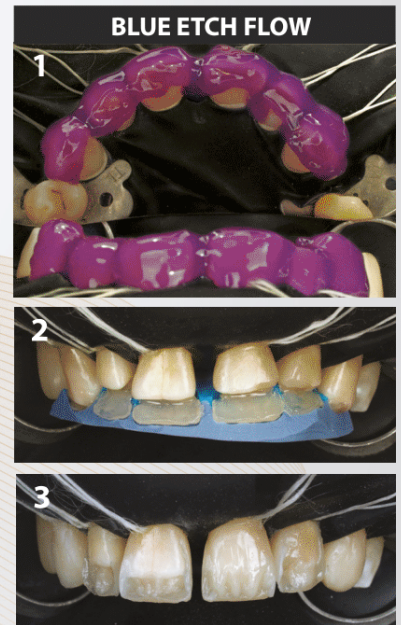


Available packages:
 BLUE ETCH 2 ml
 BLUE ETCH 10 ml
 BLUE ETCH 50 ml
 BLUE ETCH MEGA PACK 3 x 10 ml
 BLUE ETCH MONSTER PACK 10 x 2 ml

Flowable dental etchant

BLUE ETCH FLOW
 CE 2409 O-phosphoric acid 36%

Available packages:
 BLUE ETCH FLOW 2 ml
 BLUE ETCH FLOW 10 ml
 BLUE ETCH FLOW 50 ml
 BLUE ETCH FLOW MONSTER PACK
 10 x 2 ml



YELLOW PORCELAIN ETCH
 CE Hydrofluoric acid 9,5%

Available packages:
 Syringe 2 ml



SILAN
 Methacrylic silane CE

Available packages:
 Syringe 2 ml

EXCELLENT ABSORPTION

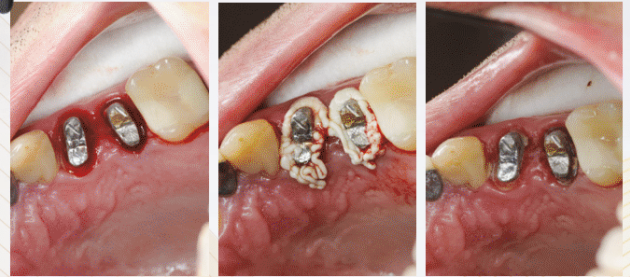


FOAM for staunching the bleeding

Available packages:
ALUSTAT FOAM 0,8 g
ALUSTAT FOAM MEGA PACK 4 x 0,8 g

ALUSTAT FOAM

Aluminium chloride 20% **CE** 2409



LIQUID for staunching the bleeding

Available packages:
ALUSTAT 10 g

ALUSTAT
CE 2409 Aluminium chloride 25%



GEL for staunching the bleeding

Available packages:
ALUSTAT GEL 5 ml
ALUSTAT GEL 10 ml
ALUSTAT GEL MEGA PACK 3 x 10 ml

ALUSTAT GEL

Aluminium chloride 25% **CE** 2409



Preparation for local cauterisation the mucous membranes

Available packages:
dropping bottle 10 ml
+ applicators



TCA DENT

Trichloroacetic acid 35% **CE**

Knitted retraction cords, 254 cm length

000.0 smallest size
retraction cord available on the market

unique smooth weave

BEST-CORD NANO

CE 2409



6 SIZES:

- 000.0
- 000
- 00
- 0
- 1
- 2

Length matters
- 254 cm



Tools for packing retraction cords in the gingival pockets

3 TYPES



Possible variants:
RETRACTION CORD PACKERS
1. UNIVERSAL
2. ROUND 1,5 mm
3. ROUND 3 mm

RETRACTION CORD PACKERS

CE



Tools for rubber dam

Each item of Rubber dam Set available

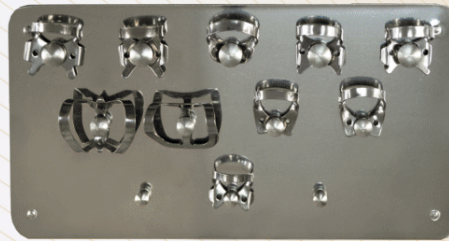
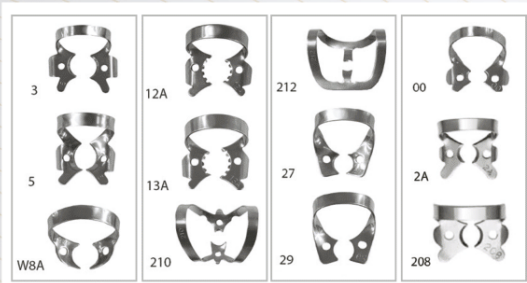
separately!

12 types of clamps
Also available in satin version



Set available:
RUBBER-DAM PUNCH
CLAMPS FORCEPS
RUBBER-DAM FRAMES (3 sizes)
THE SET OF CLAMPS
BASE FOR CLAMPS

RUBBER-DAM SET
CE



Flat jaws for small lower molars (No 3).
Festooned wings for large upper molars.
Wings fit the gum curvature (No 5).
Festooned jaws for molar's roots (No W8A).
Serrated jaws for lower right and upper left molars (No 12A).
Serrated jaws for lower left and upper right molars (No 13A).
Small and large jaw for anteriors (No 210).
Flat jaws for anteriors (No 212).
Rounded jaws for premolars (No 27).
Rounded and at jaws for premolars (No 29).
Small jaws and high bow for anteriors and premolars (No 00).
Wings, flat and large jaws for premolars (No 2A).
Festooned wings, flat jaws for large premolars (No 208).

Tools for rubber dam Start Pack

ADDITIONALLY RECEIVE **for free!**

- RUBBER-DAM (medium plain)
- RUBBER-DAM TEMPLATE PREMIUM with pen
- RUBBER-DAM LIQUID
- Light-cured rubber dam liquid
- RUBBER-DAM NAPKINS
- RUBBER-DAM CORD
- Dental dam stabilizing cord (medium)

Set includes:
RUBBER DAM PUNCH
CLAMPS FORCEPS
RUBBER DAM FRAME (M SIZE)
CLAMPS NO 12A, 13A, 208, 210



RUBBER-DAM SET
MINI
CE

Light-Cured RUBBER-DAM liquid

RUBBER-DAM LIQUID
CE

Available packages:
RUBBER-DAM LIQUID 1,2 ml
RUBBER-DAM LIQUID
MEGA PACK 4 x 1,2 ml



RUBBER-DAM
CE

Available package:
36 pcs
Available variants:
- plain BLUE: medium 0,18 mm
or heavy 0,22 mm
- mint GREEN: medium 0,18 mm
or heavy 0,22 mm
- mint BLACK: medium 0,18 mm



RUBBER-DAM NAPKINS
CE

Available packages:
RUBBER-DAM NAPKINS 36 pcs

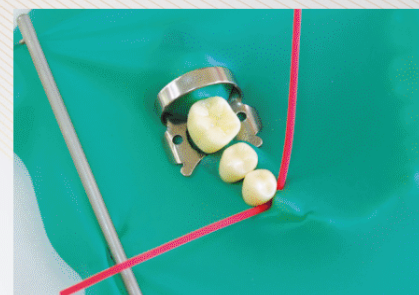


Dental dam stabilizing cord

RUBBER-DAM CORD

Package containing 1,2 m of rubber dam cord

Available packages:
RUBBER-DAM CORD fine
RUBBER-DAM CORD medium
RUBBER-DAM CORD thick



Silicone rings for marking of instruments
in stomatology

SILICONE RINGS

Available packages:
SILICONE RINGS 20 pcs
SILICONE RINGS 100 pcs

Available colours:
● black
● purple
● blue
● red
● green
● yellow
● white



LIQUID for gingival pockets



Available packages:
 GLUCOSITE 2 ml
 GLUCOSITE 50 ml
 GLUCOSITE MONSTER PACK 10 x 2 ml

GEL for gingival pockets



Available packages:
 GLUCOSITE GEL 2 ml
 GLUCOSITE GEL 50 ml
 GLUCOSITE GEL MONSTER PACK 10 x 2 ml

GLUCOSITE

Chlorhexidine digluconate, hydrogen peroxide

GLUCOSITE GEL

Chlorhexidine digluconate, hydrogen peroxide

Gel promoting complete polymerisation of dental composites



Available packages:
 INOX 2 ml
 INPX MEGA PACK 4 x 2 ml

INOX

propanetriol (glycerol), Ph Eur purified water, gel base



Caries detector

SPRAY for pulp vitality testing

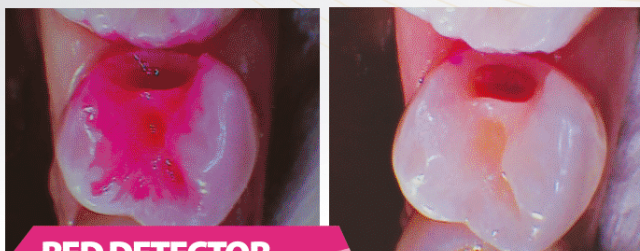


Available packages:
 RED DETECTOR 2 ml

Aroma:
 - mint
 - orange



Available packages:
 PULP SPRAY 200 ml



RED DETECTOR

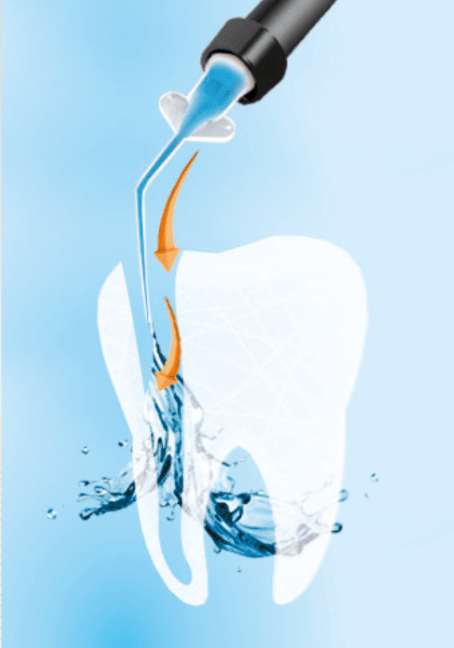
CE 2409 Rhodamine

PULP SPRAY

CE

elastic applicators

for application



Elastic applicators for liquids, creams, pastes, gels

Available packages:
20 pcs

APPLICATORS



◀ **ELASTIC APPLICATOR 27G straight**
length: 41 mm
diameter: 0,4 - 0,2 mm



◀ **ELASTIC APPLICATOR 27G bent**
length: 41 mm
diameter: 0,4 - 0,2 mm



◀ **ELASTIC APPLICATOR 25G bent**
length: 41 mm
diameter: 0,5 - 0,3 mm



◀ **ELASTIC APPLICATOR 25G long bent**
length: 56 mm
diameter: 0,5 - 0,3 mm



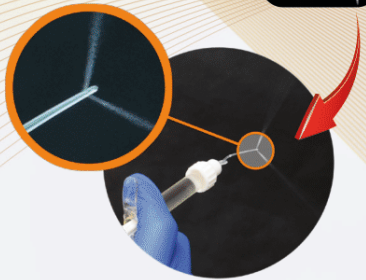
◀ **ELASTIC APPLICATOR 22G curve**
length: 32,3 mm
diameter: 0,7 - 0,5 mm



◀ **ELASTIC APPLICATOR 21G long bent**
length: 56 mm
diameter: 0,8 - 0,6 mm



◀ **ELASTIC APPLICATOR 27G bent with two side holes**
length: 35 mm
diameter: 0,4 mm



ADDITIONAL ACCESSORIES

Available packages:

- 1. ELASTIC APPLICATORS
10 pcs
ELASTIC APPLICATORS
20 pcs
- 2. GEL APPLICATORS
20 pcs
GEL APPLICATORS
50 pcs
- 3. BRUSH APPLICATORS
10 pcs
BRUSH APPLICATORS
20 pcs
- 4. APPLICATORS FOR ALLUSTAT FOAM
10 pcs
- 5. APPLICATORS FOR SYNTAX
5 pcs
- 6. PAPER FOR PRODUCT MIXING
30 pcs
- 7. APPLICATION PIPETTES
5 pcs



for suction



PERFECT PROTECTION

- Available colours:
- green
 - blue
 - pink
 - beige
 - white
 - transparent



PROTECTIVE VISORS

CE

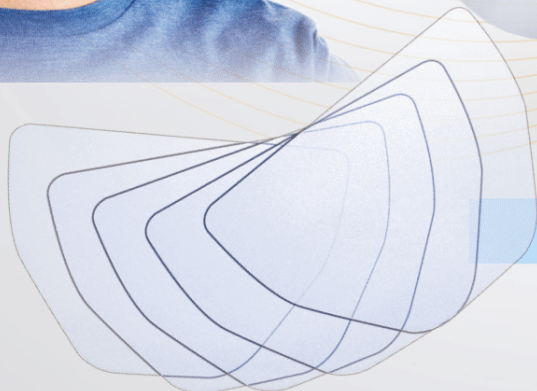


COMFORT
with set of foils



COMFORT LIGHT
with set of foils

SET of removable protective foils



ANTISTATIC FOILS

CE

Available packages:
4 x RELAX (0,175 mm)
5 x STANDARD (0,125 mm)
4 x LIGHT RELAX (0,175 mm)

COMFORT OF WORK

**PROTECTIVE VISORS
ATTACHED TO GLASSES**
CE



**PROTECTIVE PADS FOR
A PATIENT**
CE

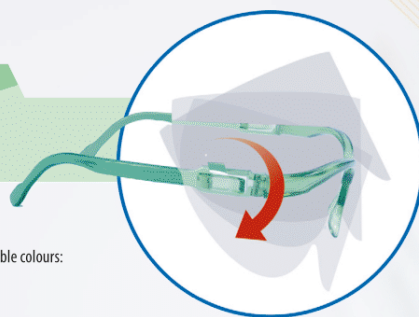
Packing includes:
20 pcs OF DISPOSABLE PADS

ONE SIZE

**PROTECTIVE SHIELDS
FOR A PATIENTS**
CE

Packing includes:
Shield frame with plastic hooks
+ set of exchangeable foils - 8 pcs

- Available colours:
- green
 - blue
 - pink
 - beige
 - white
 - transparent

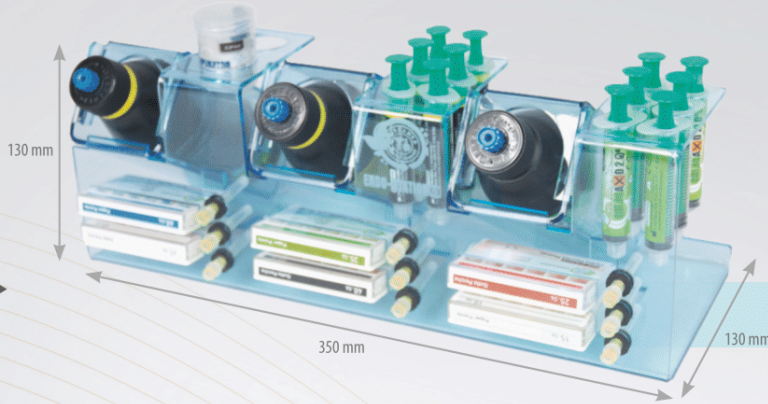


**GLASSES FOR
POLYMERIZATION**



Line of endodontic organizers

ENDO-STATION GO
EASY 3

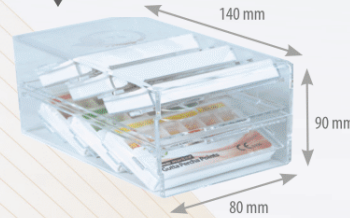


ENDO-STATION
CE

ENDO-STATION GO
GUTTA BOX 12



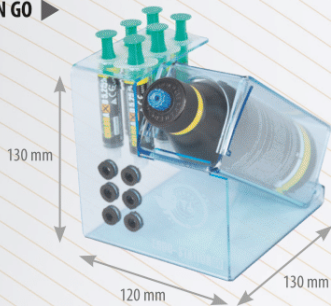
ENDO-STATION GO
GUTTA BOX 2X3



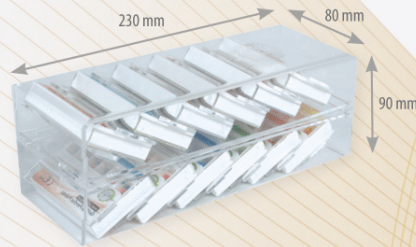
Available in colors*:
● green
● blue
○ transparent

* ENDO-STATION GO GUTTA BOX available only transparent

ENDO-STATION GO
EASY 2

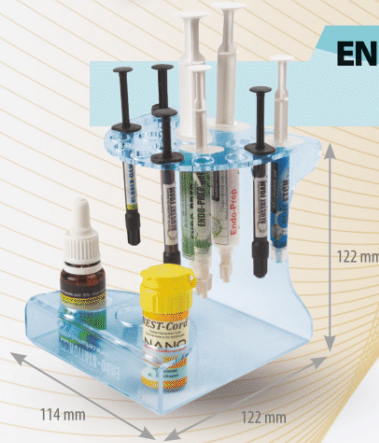


ENDO-STATION GO
GUTTA BOX 2X6



ENDO-STATION GO MINI
CE

Available in colors:
● green
● blue
○ transparent



Perfect picture!



15
pcs
Anti-reflex

DENTAL CONTRASTOR
CE

- universal
- single use
- flexible



Protective enamel with fluoride for children



FLUOR DEFENDER

0,1% fluorosilan (1600 ppm F) HEMA



Available packs:

- FLUOR DEFENDER MINI

3 x 1 ml of preparation + set of applicators

- FLUOR DEFENDER MAXI

10 x 1 ml of preparation + set of applicators

MARKETING MATERIALS FOR PATIENT

Available packages:

1. 3D STICKERS 10 pcs, 50 pcs
2. LEAFLET „ROOT CANAL TREATMENT“ DEDICATED FOR PATIENT 20 pcs, 50 pcs, 100 pcs
3. PUPPET 1 pcs, 2 pcs, 3 pcs
4. BOXES FOR MILK TEETH 5 pcs
5. DIPLOMA „BRAVE PATIENT“ mix 20 pcs
6. GUESSING GAMES FOR A BRAVE PATIENT 20 pcs
7. TEETH BRUSHING CALENDAR for kids
Set included: teeth brushing calendar, diploma, stickers, magnet
8. PUZZLES FOR CHILDREN 36 ELEMENTS



Specialised Mouthwash

DENT FRESH

Available packages:

- Start Pack concentrate in syringe 50 ml
- + bottle
- + dispenser
- concentrate in syringe 50 ml

Two variants available:

- MINT
- ORIGINAL



SIMPLY TRAVEL SILICONE FLOSS

Available packages:

- 12 pcs (4 x blue, pink, transparent)
- 1 pc (random color)
- (length 82 mm, thickness 3 mm, ring diameter 22 mm)

- ✓ Plaque removal
- ✓ Gum massage
- ✓ Soft and flexible
- ✓ Reusable

Now also available in single packaging

